

*The*

# *Amherst Island BEACON*

*Newsstand  
\$2.00*

*Issue 353*

*www.amherstisland.on.ca  
aibeacon@sympatico.ca*

*August 2007*



## *Captain Earle Willard Retires*



PHOTO BY TERRY CULBERT

*TUESDAY, JULY 31ST, 2007, 15:40*

*CAPTAIN EARLE WILLARD AT THE CONTROLS IS SURROUNDED BY LEFT TO RIGHT: DIANNE MARSHALL, JANE MCGINN, HUGH FILSON AND RAYMOND WEMP. CAPTAIN WILLARD BROUGHT THE FRONTENAC II INTO THE STELLA DOCK ENDING HIS 42-YEAR CAREER JUST BEFORE 16:00 HOURS.*

### **FROM THE EDITOR**

- Ian Murray

I took a break from working on this edition to record two more of the old Beacons for CJAI. It is a bit disconcerting to be reading about the terrible time we had here in March of 1971 on a beautiful late July day. Yesterday's rain cleared the air and the Island continues to be greener at this time than most years.

\*\*\*

Each month, with very few exceptions, I am pleasantly surprised (and gratified) by the articles and photos submitted to our little newsletter by our readers.

\*\*\*

The Beacon staff salutes the new look at the radio station. Ross Haines and Woody Woodiwiss did the work on the call letters for

all the world to see.

Warm thanks to Stanley Burke whose generous donation made the project possible.

\*\*\*

Congratulations to local artist Peter Large who has had one of his paintings selected by the Government of Ontario for its permanent art collection.

The drawing (ink and colour pencil) is entitled "Old Barn, New Siding, Amherst Island", and is based on Nick McGinn's red-sided barn on Front Road.

\*\*\*

Congratulations to Earle Willard on his retirement from the ferry following a long and faithful service.



**The Amherst  
Island Beacon**  
Issue 353  
August 2007

*Published monthly,  
the Beacon is  
wholly funded by  
paid subscriptions  
and by copies sold  
by Daniel Little,  
and at the Amherst  
Island General  
Store.*

**Subscription**

**Rates:**

Canada \$30/yr  
USA \$35/yr  
Overseas: Contact  
Us!  
E-Mail \$20/yr

August Printing  
350 Copies

**Subscription &  
Editorial**

A.I. Beacon  
14775 Front Road  
Stella, ON  
K0H 2S0

Voice & Fax  
(613) 389-3802  
E-Mail: aibea-  
con@sympatico.ca

**Photo Editor:**

Sue Frizzell c/o  
aibea-  
con@sympatico.ca

**Typesetting:**

Sue Frizzell c/o  
aibea-  
con@sympatico.ca

**Deadline for all  
submissions:**

25th of each Month

**Printed By:**

Burke's Printing,  
Napanee

**Credits:**

Word 2003  
Microsoft Publisher  
2003  
Pagemaker 7.0  
Acrobat 6.0  
Family Tree Maker  
9.0

## NEIGHBOURHOOD

- Lyn Fleming

Get Well this month to Brian Little.

Apologies to Katherine Wemp, who I mistakenly left out of last months congratulations, when she became a first time great-grandmother when granddaughter Lindsay Wemp and MacKenzie Larwill welcomed their daughter, Camryn.

Betty Wemp, Kathy Reed and Kathy's sister Joyce traveled to P.E.I. to visit sister/sister-in-law, Maureen Tasker and family.

Alex and Debbie Scott and family also headed east to New Brunswick for vacation.

Meanwhile, Janet Scott headed west to Alberta with her daughter Cathy Atanemuk, to attend a family reunion and visit daughter/sister Ruth Scott.

Kathy Reed celebrated her 50th birthday with family and friends, on a sunny Saturday afternoon, at her south shore home.

Happy 70th birthday to Lillian Miller.

My mom Kay Wolfreys, has arrived for her annual summer visit from Florida.

St. Alban's held another successful Chicken BBQ earlier in July.

St. Paul's held their 59th annual Garden Party and I understand it was the most successful one yet.



## ELLEN WINIFRED LAURA

### WOODS

Nellie, wife of Harold "Had" Marshall, died at KGH on June 30<sup>th</sup>, in her 99<sup>th</sup> year.

She was predeceased by her husband, her son William Marshall and her brothers Thomas and John Woods. She is survived by her daughter-in-law Avis Marshall of Conneaut, Ohio, and by many nieces and nephews.

She also leaves behind her best friend and sister-in-law, Helen Caughey.

## WOMEN'S INSTITUTE

- Joyce Reid

The July meeting was held in St. Paul's Church Hall – with 14 members and several guests attending.

A Tai Chi demonstration was led by Tom Daly, an enthusiastic instructor of 18 years. He gave us the historical background of the Taoist Tai Chi Society in Canada – which was introduced by Master Moy Lin-Shin, a Taoist monk, who emigrated from Hong Kong to Canada in 1970 and began instructing in Toronto. From a simple beginning the society has expanded to 28 countries with 500 branches.

A small group of Islanders practice on the Island once a week and attend regular sessions in Amherstview of Kingston. They are convinced it's beneficial to restoring and maintaining good health and well-being – for all ages and conditions!

We were led through the foundation exercises which turned out to be painless and stimulating – so why not try it? For more information phone 613-544-4733 or [www.taoist.org](http://www.taoist.org) with links to the Kingston website or talk to Joyce Haines, who is very keen to have a group on the Island.

Delicious, healthful refreshments were served by hostesses Marilyn Pilon and Anne Henderson.

Guests left and the meeting began. President Jackie Sylvester mentioned the Federated Women's Institutes of Ontario (FWIO) support the Caribbean, Central and South America Crafts Projects. Craft materials are sent to help rural women manage their well-being. Pennies that are collected at every meeting go to digging wells in the Water For All program around the world.

Grandmothers In Rwanda will receive \$8,526.88 that was raised in Ontario, \$2000 of which was realized at our local event in Napanee in April 2007.

Compostable bags were shown and are for sale by AIWI. They are currently being used in the Weasel & Easel to hold purchases made there. The 2007 Directories are now available for sale in the General Store. Additional information on the two above articles will appear elsewhere in the Beacon.

Regional 4-H Scholarships are available through the FWIO – contact Jackie Sylvester. The topic "4-H: A Gift To Last".

The October 20<sup>th</sup> Breast Cancer Ride & Stride Event on the Island was discussed. Plans are well under way and we hope for and all-Island turnout.

The Summer Outing on August 15<sup>th</sup>, was presented by Coralie Marshall. We will leave on the 9 a.m. ferry and travel to the Ontario Heritage Site, Kingston Mills Locks. From there we move on to Fulford Place in Brockville. This mansion was built for Sen. Geo. T. Fulford the founder of Pink Pills for Pale People. We will have lunch there in The Tearoom followed by a tour of the house and gardens. The tour is \$5 – since Credit Cards are not accepted you will need cash for this and your lunch. Members and Guests are welcome.

The next regular meeting is an Open R.O.S.E. Meeting on Sept. 19<sup>th</sup> at 7 p.m. in St. Paul's Church Hall. The Program is Fair Vote in Canada – Proportional Representation.

Meeting closed with the singing of God Save the Queen and adjourned just before 10 p.m.



# ISLAND HAPPENINGS WITH TERRY CULBERT



WITH TWO UMBRELLAS PROTECTING HIM FROM THE SUN AND LOOKING VERY MUCH LIKE A SCENE FROM THE MOVIE "MARY POPPINS", JIM VANALSTYNE BUILDS A NEW CHIMNEY ON THIS NORTH SHORE HOME IN THE HAMLET OF EMERALD.



ELLIS WOLFREYS, CJAI'S HOST OF THE BLUEGRASS SHOW: THE WOLF DEN, CELEBRATES HIS FIRST ANNIVERSARY ON THE AIR WITH HIS FRIEND AND FREQUENT GUEST GORD STRUTHERS. THE SHOW TOOK PLACE ON WEDNESDAY, JULY 25TH.



AN AMHERST ROOFING CREW HEADS HOME TO THE ISLAND ON BOARD THE FRONTENAC II AFTER A LONG, HARD DAY TAR ROOFING SCHOOLS.



THE VICTORIA HALL TEA ROOM OWNERS BERNICE GOULD AND NEIL JOHNSTON HOSTED THE RED HOT FLASHERS OF KINGSTON IN JULY. THE GROUP, FORMED FOUR YEARS AGO, ARE PART OF THE WORLDWIDE RED HAT SOCIETY. TO BE A RED HATTER, A WOMAN MUST BE OVER 55, OWN A RED HAT, AND HAVE A GOOD SENSE OF HUMOUR.

ALL PHOTOS THIS PAGE BY TERRY CULBERT

## JANET'S JOTTINGS

- Janet Scott

August has neatly slipped into place. How quickly the summer passes, the older one gets! There seems to be a ratio between time and age that I haven't solved the equation as yet. All I know is get out there and enjoy each and every day that God grants you with the joy of a three year old!

If you were listening to Dayle's show on CJAI last July 16th you'll know about the challenge I gave all Islanders and visitors. Before August 31st I challenge you to see all six of our local, nesting swallow species and be able to report to the Island radio station with your results. The prize is a birding book or if you prefer a guided bird walk or drive provided by myself, time and place your choice. Dayle will draw our winner from the correct entries on September 3rd on the Udder Morning Show. Please include address or number at which we can reach you if you don't live on the Island.

Now for those who were not listening to our bird talk, below I'll give you the sneak clues that will help you identify these birds. A good place to look is on the wires as mixed groups of swallows gather in preparation for migration. The largest swallow is the Purple Martin. He is 8 inches (20cm) in length. The adult male is dark, shiny purplish blue and the female and young are grayish below. All Martins depend on humans for nesting sites so you will have seen them around multi- apartment nesting boxes such as at Captain Bulch's old house in the village or Martin houses on the KFN property. These swallows leave first to fly to South America so may be gone by August 18th or so.

The next is the very obstinate Barn Swallow. He is 6 3/4 inches (17cm) in length and is our only swallow with the deeply notched swallow tail. If he decides to build on your overhead door light you may find him aggressive and determined about

that spot. Their nests are mud cups made with many tiny mud balls. The back is shiny blue with rusty throat and buffy underparts. The rectangular patch on its forehead is rusty.

Similar is the Cliff Swallow at 5 1/2 inches (14cm) but its rump patch and the forehead patch are buffy. It doesn't have a forked tail and it builds gourd shaped nests under eaves and on walls made also of tiny mud balls.

The Tree Swallow at 5 3/4 inches (15cm) is our most hardy and common species. We have had a Tree Swallow as late as the Christmas count and as early as March 7th on the Island. They nest in cavities so occupy nesting boxes and natural cavities in posts or trees. Their nests are grass and feathers loosely made in the box. They will grab a floating white feather out of the air as part of their courtship. They have shiny blue or green backs with white breasts and bellies. The juvenile is dusky on the back and shows a diffuse breast band.

The Rough-winged Swallow at 5 inches (13cm) is brown above with a brownish wash on chin, throat and breast. It nests on the rock cliffs along the South Shore Road in cavities and crevices.

The smallest swallow is the Bank at 4 3/4 inches (12cm) and is brown on the back with white breast and chin but has a dark breast band which is more pronounced than on the juvenile Tree Swallow.

Good Luck with your Swallow identification. Hopefully you'll find them all before August 31st .

An update on our friendly Snow Goose. Now he has adopted Garry and Susan Filson and has taken up residence at the Sandy Bay Bed and Breakfast during late July. Thanks everyone who calls and lets me know where he is.

Good Birding,

## COUNCIL GLEANINGS

- Ian Murray

The agenda documents for the July 9<sup>th</sup> meeting totalled 295 pages. There was a lot of information on mainland water and sewer issues and (thankfully) very little of interest to Islanders. There have been no building permits for new houses on our Island so far this year.

\*\*\*

There were 242 pages for the July 23 agenda – some of it of interest to Islanders.

\*\*

A motion was carried, in response to a letter from John Harrison: "...that notices of meetings regarding wind turbines be posted on the Township website."

\*\*

"Councillor Ibey congratulated ... the Amherst Island Recreation Committee for their Canada Day celebrations and requested that letters be sent to the organizers ...."

\*\*

"Moved by Councillor Ashley ... that congratulations be forwarded to Senior Captain Earle Willard on his retirement from



the Amherst Island Ferry Service. Motion carried."

\*\*

"Councillor Ashley asked the CAO if any response has been received from the Minister of Transportation regarding the ferry issue and the invitation to attend a meeting with Council. The CAO has not received a response from correspondence sent June 28<sup>th</sup>.

Moved by Councillor Ashley ... that the CAO contact the local MTO office requesting a response to the Township's correspondence and, if there is no information to report from the local office, then the CAO will contact the Minister of Transportation's Chief of Staff in the Toronto office, and further, that the response received from MTO be reported to the public. Motion carried."

Council received a letter from Dick Dodds, on behalf of the Amherst Island Ferry Committee, expressing appreciation for the positive meeting with Councillor Ashley on June 9th.

"Emerging from the discussion came a sincere willingness, on the part of our Committee, to pursuing cooperatively and transparently, with the Council, a solution to resolving the issues surrounding the future operation and financing of our ferry service."

Mr. Dodds goes on to request that his committee be directly involved "in negotiating a revised contract between the MTO and our Township for the operation of the ferry service".

## AIMS

- Hugh Jenney

Thirty-three men and one student sat down to a delicious breakfast prepared by Janet Scott & Daniel Little.

Alan Kidd reported on the new membership system for the AI Museum. People are asked to join for a lifetime membership fee of \$10. Their names will be listed in an historic membership book. This will save a lot of time and be good for grant purposes. Peter Large's prints of Island houses will go on sale for \$10 to raise money for the AI Museum.

Dick Dodds reported on the AI Ferry. The AI Ferry Committee's newsletter was well received. The AIFC is working with Duncan Ashley. The audit has been completed. A meeting has been scheduled with Randy Hillier and Ian Wilson for July 28th. There has been an increase in revenues. A letter has been sent to the MTO requesting our representation at their ferry committee meetings. Dick said we had to pay \$70.00 to Loyalist Township for access to information under the Freedom of Information Act. The AI Ferry Committee was told that they would NOT have to pay anymore so that money may be returned. Ken Albertan generated a round of applause when he thanked Dick Dodds and the Ferry Committee for all their hard work on our behalf.

Allan Glen reported that our school outdoor education garden now has a very big sundial.

Island Market Update: Our AIMS wagon is our biggest money raiser, but we need four more volunteers to man it. These positions were filled immediately.

Peter Moes Memorial: Duncan Marshall and Peter Moes and the rest of us are to be remembered in one of three ways. Through a school memorial fund, tree with plaque or by contributing to the Ameriks fund. Think about it. We will decide at our August 11th meeting.

September is our time to renew our executive. If you can serve, please volunteer. Our vice-president, Dayle Gowan, has agreed to move up to president. I have agreed to continue on as secretary.

Katelyn Aikenhead received the AIMS \$50.00 award at her grade 8 graduation.

Dick Dodds introduced his good friend, Dr. Marc Garneau. Dick started his friendship with Marc when Marc agreed to have his name on a school that was losing students. They introduced a space technology course and Marc spent a lot of time at the school. The enrollment went from 650 to 1900. Students come from everywhere including England.

Marc was born and raised in Quebec, attended RMC and joined the Canadian Armed Forces. He was selected to be Canada's first astronaut; has flown three missions. He is the past president of the Canadian Space Agency. He ran for Parliament, but the separatist won. He does a lot of speaking and is a director on several boards

Marc started by informing us that the Canadian Space Agency's mandate is to use space for social improvement ie use space for good things like weather reports, mapping resources, and watching for problems with our environment.

The American space effort through NASA has a grander mandate – basically to explore the universe – and also a much greater budget - \$17 billion compared to our \$300 million.

Canada was the third country in the world to get into space.



We achieved that distinction when we launched Alouette 1 in 1962. Actually NASA launched it for us because the launchers are very expensive. Alouette 1 worked for ten years and served as the source for 1200 scientific papers. It discovered the cause of our Northern Lights which sometimes interfere with communications.

The Candian space program has always had the mandate to link all Canadian communities using space technology. Telesat was created in 1969 to help fulfil this mandate. Telesat launched Anik A, the world's first domestic communication satellite in 1972. It was designed to last seven years, but stayed in service for over 10 years.

The current Telesat communication satellite, Anik F, was designed to last 15 years, but will probably last almost 20.

The Canada Arm launched in 1981 was a 100% success. It took us twenty years to get the US to call it the Canada Arm. Canada Arm 2 is presently on the space platform. NASA was so impressed that they asked for two Canadian Astronauts and in 1984 that was raised to three. So far eight Canadians have flown in space.

Radarsat designed and built in Canada, was launched in 1995 with a mission to survey Canada and the rest of the world. Its radar imaging allows it to see through clouds and work day and night. It is used on a daily basis to detect oil spills, natural disasters and to keep an eye on our changing environment.

Our Canadian Space Agency is pragmatic and provides social and economic benefits for all. We are all dependent on our satellites. Every time you use an ATM, TV, GPS, or check on the ozone layer, it goes through a satellite.

Our space agency has generated spin-off companies worth \$2.5 billion. Space is a growth sector --52% of what we make is exported.

Dr. Garneau declared that Canada is technologically mature.

Retired Telesat employee, Alan Kidd, asked Marc about the possibility of developing a very small satellite for students to learn on.

Dr. Garneau replied that the Canadian Space Agency is doing just that and much more. The CSA is watching the amount of carbon dioxide being created globally especially in China. The CSA is helping York University with its study of wind. The CSA is working with UBC and its Hubble Telescope which is orbiting the earth. It can watch the same star for eight weeks without blinking. The CSA is working with the U of T, Saskatchewan U., Calgary, York UBC and other smaller universities.

Richard Branson's Virgin Galactic is selling space rides for \$200,000 in 2009. Marc says this is a 1.5 hour ride up to the edge of space--130 km up. In that time a customer will experience four to five minutes of weightlessness.

Marc was asked if he believed in other life forms being out there. He said yes, but they have not visited us yet. Spiritually, the experience does get one thinking because one is living on a heightened plane. Marc believes there is a God, but he reminded us that he is and was a churchgoer before he was an astronaut.

The experience: As a serious engineer all he could think about was not screwing up, but the floating brought out the child in him again. He just couldn't help himself. It does change one's perspective as one flies around the planet every ninety minutes. It is an amazing view--beautiful, finite and we are damaging it. He has seen the difference in forests, glaciers and desertification

(Continued on page 8)

# ST. PAUL'S GARDEN PARTY



PHOTO BY TERRY CULBERT

*THE DYNAMIC DUO BEHIND THE GRILL AT ST. PAUL'S GARDEN PARTY ON JULY 28TH IS KEITH HEWSON AND BRIAN LITTLE*



*MARGARET MALONEY AND JANET GRACE*



PHOTO BY TERRY CULBERT

*SEVEN YEAR OLD ANGUS LITTLE BECOMES SMITTEN WHILE WATCHING AN OLDER WOMAN SING AT THE ST. PAUL'S GARDEN PARTY. THAT OLD WOMAN IS TEN YEAR OLD MEGAN HAWLEY ACCOMPANIED BY HER GRANDFATHER ALLAN GLENN ON KEYBOARD.*



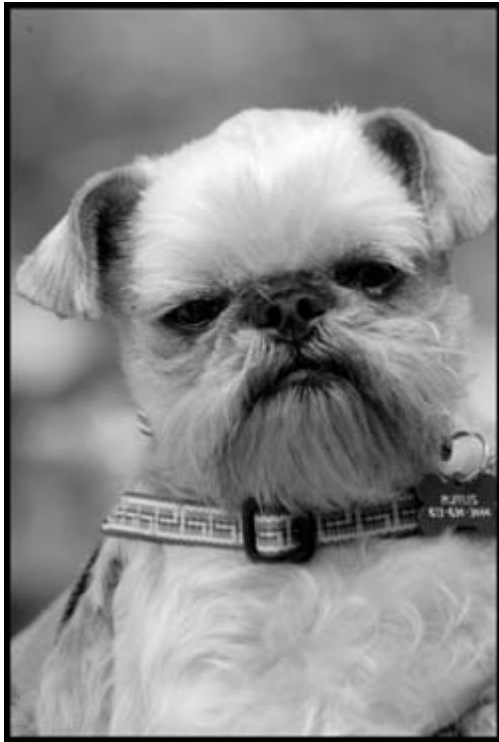
*CORALIE MARSHALL*





*LEFT: CLAIRE DUNN AND HER SON.*

UNLESS OTHERWISE NOTED, ALL PHOTOS BY BRIAN LITTLE.



*BRUCE CAUGHEY*



PHOTO BY TERRY CULBERT

*WHO COULD RESIST BUYING THIS PICTURE OF DICK DODDS? IT'S THE PERFECT PICTURE.*

AIMS (Continued from page 5)

in just the short time he has been flying." 6.5 billion people are hurting the planet," he said.

There are four Canadian Space Agency priorities:

1. Earth observation re. the environment
2. Space Science
3. Navigation
4. Education Outreach: Teachers are provided with materials for their classrooms

If you want to help the CSA then write your politicians about our paltry budget of \$300 million. Politicians do not go to bed at night worrying that I must give money to the space program or I won't get elected.

Canada is using the Russian space launchers because they are cheaper. Russia is a space sharing nation with a lot of pride--they were first. Their Soyus 1700X rocket is getting a lot of business.

China is on a ten year program. They want to compete with the US and Russia militarily. They claim to have shot down one of their own satellites. They want to go to the moon.

If you want to work for the CSA then apply through the Federal Government. Seven hundred people work there now.

Size of the satellite: Allouette 1 and 2 were about one yard in diameter. The new fifteen year satellites are 45 meters wide including their extended solar panels.

Space debris: NORAD tracks anything bigger than 10 cm. Anything the size of a marble will destroy your space ship. Rockets and satellites are now being designed to burn up.

Brian Little thanked Marc for his informative, fascinating and very personal talk.



PHOTO PROVIDED BY ZANDER DUNN

MARGARET MCKEE

## INTERVIEW WITH MARGARET MCKEE

- Zander of DUNN INN

Margaret McKee is the youngest 91 year-old woman you will ever meet. I know she is 91 because she was born on February 5, 1916 right here on Amherst Island. She began her life in the house (one of the old buildings) near where Emily Tugwell now lives down near the ferry dock. The house in which she was born is now over 241 years old because it was 150 years old at her birth.

Margaret's father was John Tugwell, and her older brothers were Gordon and Robert, both of whom later became drovers. Her mother was Christina Kilpatrick, a sister of John Kilpatrick, father of our own Clinton Kilpatrick who now resides at Fairmont Manor. Margaret has an excellent picture of the Kilpatrick family among whom I recognized Art Kilpatrick, the grandfather of Warren and Laurie Kilpatrick who both live on the island.

Margaret does not have many memories of her early childhood but she does remember her grandmother cooking up pancakes on a big griddle and being unable to keep up with the demands of all the members of her family.

When Margaret was growing up the ferry dock did not exist. She remembers many islanders had motor boats. They were the old inboard motor boats some of which had little cabins on them. She especially remembers Hugh Glenn going back and forth on the lake in his boat and she can still see Dick O'Connor going to the mainland in his special craft to bring back the mail to the island.

On one occasion Margaret's father, John Tugwell, was on one of those boats when the motor quit. The owner was unable to get the motor restarted so the boat and its occupants drifted away out into the lake. They were rescued by a boat from Kingston which brought them back to the mainland from whence they eventually returned to the island.

Margaret remembers the old dock that used to be located in front of where DUNN INN stands today on McDonald's Lane. But more importantly she remembers the water traffic that used the Neilson dock down below the store. Tons of coal were off-loaded there for the Islanders to use to heat their houses. Margaret figures the first boat that connected the Island centres to the mainland came to the Neilson dock about 1927 or 1928. It was called the Brockville and came from Picton, stopped at Emerald, off-loaded and reloaded at Stella and then went on to Kingston.

Boats and trains were the means of travel in those days. Margaret had her first train ride when she went with her mother from Ernestown station to Kingston. Her most memorable boat trip was from Kingston to Rochester. She went from there to Buffalo and then returned by train to Kingston. That was a major excursion never to be forgotten.

As a good Islander, Margaret took many trips across the ice. The trip she will never forget involved the Cochrane family who lived on the South Shore. When old Mr. Cochrane died, his son, Alva, was sent over the ice to pick up the undertaker, Ralph Lindsay. On the way back they encountered Margaret's father and her brother, Gordon, transporting pigs across the ice on sleds led by a horse and sleigh. The Tugwells had to go over the ice which had formed a rough edge around the lake and Margaret's father believed that as soon as they got over the rough edge the going would be smooth. They conquered the rough part only



(Continued from page 8)

to go through the smooth ice almost immediately.

Ralph Lindsay was asked if he could drive a horse and sleigh and, when he said he could, he was sent, behind Bob's horse and cutter, to the Island to get help. Meanwhile John, Bob and Gordon Tugwell along with Alva Cochrane stayed to work to rescue the pigs from the cold water. They were not successful until the next day when they had to use pick axes and saws to literally cut the frozen pigs out of the ice which imprisoned them.

Margaret attended Number One Public School on The Front Road where the Maudes live today. It went from grade one to grade eight. She walked to school with her chums but in the winter, especially when the snow got deep, her family paid Fred Richards 25 cents a week to carry her to school on his horse-drawn sleigh. That prompted Margaret to observe that money was worth more in those days. When she went to Kingston to buy new clothes and shoes her family gave her \$5 to spend and she came home with a complete outfit.

The Public School teacher Margaret remembers best was Helen Sylvester who later married Wilfred Miller. Wilfred and Helen became the parents of Keith Miller and Elaine Wolfreys who live on the Island today. Her favourite high school teacher (who taught upstairs in the brick building where the Back Kitchen stands today) was Nellie Woods who later married Harold (Had) Marshall and who died last month in her 99th year.

The game most kids played was baseball. The boys often teased the girls with tricks. At school everybody would sit around the pot-bellied wood stove to keep warm. Life was simple and often tough but Margaret figures she got a good education on the Island.

Although Margaret always lived in Stella, before she was born her family lived on the South Shore where Lance Eves lives today. A year prior to her birth the family moved to the village. Her friends included Margaret and Isabel Richards, Ida and Janey Brown, Jean Cochrane and Jean's cousins Lula and Ruth Glenn.

Neilson's store carried a larger stock than did Glenn's store but when Billy Kilpatrick came to Stella to pick up bread from the mainland to take back to Art Kilpatrick's store in Emerald, Margaret's mother bought her bread from Billy before he headed for home.

In her youth Margaret was a member of the Anglican Church and part of their youth group which put on a new play in The Victoria Hall every year. The ministers at the Anglican Church during her time were The Rev. Leach and The Rev. Dixon. Margaret was never enthusiastic about the Anglican service but she still remembers the prayers from the prayer book which she had to say every Sunday.

After High School Margaret got married in 1933, at St. George's Anglican Church, Kingston, to Francis McKee, the youngest of the McKee kids who lived on the Second Concession. Fred was the oldest, then came Annie (Clinton Kilpatrick's mother) and finally Ross, father to Carman (now deceased), Robert and Ralph and Myrle, still living in our area.

Margaret had met Francis at the dances at the Victoria Hall. Whole families, but especially young people, thronged to the old Orange Lodge hall, where they had a chance to socialize. There were square dances and round dances and lots of fun with good music delivered by the famous Glenn orchestra.

Because Francis was Presbyterian, Margaret became a Presby-

terian after her wedding and she felt at home at St. Paul's under the leadership of The Rev. R.K. Earls. It was not a big move for Margaret because her mother had been a Presbyterian before she married into the Tugwell clan. Margaret became active in the St. Paul's Women's Missionary Society and in The Ladies' Aid. She got to know R.K. Earls (whom she remembers as a good preacher) quite well because her husband, Francis, often drove R.K. (who didn't have a car) around on his pastoral calls and even into Kingston.

Margaret continued to live in Stella. For a time she and her family lived where Vera Hogeboom lives today on McDonald's Lane. After Francis' parents died they bequeathed the house next to Stirling Glenn's garage (where the Whittons now live) to Francis so Francis moved his family there.

Francis and Margaret's daughter, Eileen, was born in 1933, followed by two boys. Keith came along in 1939 and Wayne rounded out the family in 1941. After working on the ferry for several years Francis took his wife and family to Kingston in 1942. Francis worked as a weighman at the old grain elevators in Kingston. His days could be very busy. Many weeks he put in more over-time hours than he did regular time hours. The Francis McKee family lived at 49 Pembroke St. in Kingston for 38 years. It wasn't until three years after Francis died of a heart attack in 1976 that Margaret moved to 95 Notch Hill Road where she lives today.

Margaret's two sons loved to return to the Island to spend their summers with their uncles. As a teenager, Wayne liked to stay out late and the hours he kept disturbed his uncle, Gordon Tugwell, with whom he often resided. Gordon figured his young charge should get to bed earlier and urged Wayne to get home before the wee small hours of the morning. Wayne used to sneak in carefully so as not to wake up his uncle Gordon. One night Gordon filled a milk pail with coal, placed it on the kitchen table and tied it to the door knob. When Wayne tried to sneak in late he pulled open the door, causing the milk pail to crash to the floor spilling the coal and making a terrible noise which woke up Gordon. From then on, Wayne knew he couldn't slip in late at night without being detected.

Margaret's only relations left on the Island are Emily Tugwell and Vera Hogeboom. All her children live outside Kingston. Eileen, who became a nurse, married Don Murray and lives in Eden Mills. Their two girls are Krista, married to Mike Jantz of Bolton, who have a son, Rylan; and Karen who lives in Rockwood and has a girl, Jessica, and a boy, Joey. Keith, a retired chemical engineer, is married to Millie and they divide their time between Calgary and The Bruce Peninsula. They have three daughters: Heather, who lives in London; Janice, and her husband, Joe Cheeseman, live in Sault Ste. Marie and they have a daughter Ruby; Mary, lives with her husband, Nick Stathis, in Vancouver, and they have two children, Charles and Margaret. Wayne married Susan; they live in Stittsville and they have two sons: Brian, of Ottawa, married to Hillary whose children are Owen and Josh; David, who lives with his wife, Mandy, in Brooklyn.

Margaret tries to see them all once a year. She also gets over to the Island to take in the various suppers, teas and special events. Margaret has been away for many years, but her roots remain on Amherst Island and she is always pleased to return when she can.

## FERRY THOUGHTS

- Alena Schram

For my first 13 years on the Island, every ferry crossing was sheer enchantment for me, mostly because I could never work out in advance which side of the boat was facing the dock when we landed. It was always a glorious surprise. I had no trouble getting on, of course, but somewhere in the middle of the North Channel, even bobbing along on the old Amherst Islander, my inner compass would fail me, and by the time we'd tied up at the dock, I was completely baffled. I could back up fairly confidently, but once I'd completed that part of the exercise, I'd be left looking frantically around for a crew member to direct me towards the ramp. Often it took two to get me underway: one to point and the other to beckon.

These days I've got my proper bearings but I can no longer back up easily. I'm convinced once you hit 60 your spine stiffens permanently into a forward position and if you crick your neck around too energetically, you're likely to do yourself a permanent injury. The best I can manage now is to turn my head slightly towards my side mirror, and with my opposite eye try to catch at least some of the crew member's arm movements in my rear-view mirror. I always know when I've done something wrong because the arm I'm looking at suddenly starts gesturing madly. Occasionally there's even a bang on the back of my car to let me know I'm about to slam into a neighbour's vehicle or a piece of the boat.

Most of my trouble stems from the fact that I'm convinced the crew is using a system of invisible mirrors to direct me. In other words, their left is my right. So when, for instance, Dan Wolfreys is swinging his arm one way, I'm always inclined to turn the opposite way, certain that this is what he really meant me to do. Dan did once tell me, through clenched teeth, "Just

follow my instructions and you'll be alright", but I still have trouble believing him.

Actually, I depend heavily on the crew, not least when they think to wake me up. In the winter, with all the windows rolled up and a hint of darkness over the windscreen, I don't feel too exposed. But in summer I'm much more vulnerable: I always hope I'm not lolling too foolishly over my seat and that my mouth's not hanging open. With the windows down, I can never be sure one of my snorts doesn't sound like the starting pistol of a lifeboat drill.

One of the traits I admire most about the crew is their ability to pack cars in tightly. They approach every crossing with complete professionalism. This means that when you take, say, the 11:30 p.m. boat and there are only 3 cars on the flight deck of what is practically an aircraft-carrier, you can be sure you'll be carefully directed to within the regulation 5 inches of the car ahead of you. Should an investigating committee ever call me as a witness, I will be able to swear to this handbook measure without any pangs of conscience.

Our boat, the Frontenac II, is, however, much more than just a means of conveyance: it's a social setting, a mail box, a courier, a pizza deliverer, a lost-and-found, a news broadcaster, a mercy ship, and sometimes the start of a new life or the end of an old. It's the first taste of the Island after a long absence. And, as it twinkles across the water on a bitter cold winter's night, it's the sign of a sweet homecoming worth waiting for.

I have every confidence that when I grow really decrepit and unable to either back up or remember which way is off, the crew will winch me up and set me down gently – somewhere – and one of them will flail their arms about and point me in the right direction. And maybe by then I'll believe them when they tell me just to follow their instructions and I'll be all right.

## WILL'S RIDE

- Sally Bowen

Will has passed the half way point of his journey - and by all reports, the toughest half.

May and early June in the Maritimes had temperatures hovering around freezing with either rain or snow 32 of 37 days of his travel over lots of short but steep mountains. Quebec travel went relatively quickly, with some great kindness at the start and near the end, but he was feeling very stressed and lonely because of his inability to communicate casually.

His break at home was glorious, as was his brief time with his mom and his sister.

Otherwise, during June and July he has been working very hard for each km he achieves. Because of the two wheeled trailer he tows, he has to stay on the shoulder, off the highway, and that surface is often quite soft gravel. There was one 14 km sandy stretch where he had to carry the front end of his bike, hauling the trailer. He has to walk up most mountains, and there are a LOT of them, as he travels north around Lake Superior. More ups than downs too.

But he has not lost sight of his goal. He is in awe as he describes the beauty through which he travels. He is delighted by occasional nature sightings, and by unexpected moments of



kindness and of simple communication from strangers. He has been very glad of the company of his friend Matt, who has traveled the long lonely stretches with him, planning to continue until Winnipeg. Messages of love and support from the Island warm him greatly.

He arrived in Thunder Bay on Monday July 30th, hosted by the President of the Morgan Horse Association of Canada. He crossed the Manitoba border on Tuesday, August 7th.

The fund-raising for MS has been somewhat discouraging. The highlight was the special time arranged by Victoria Cuyler in Newtonville at the local school, the welcome there with Victoria and A.I. Blacksmith Paul, and the help from the Kinsmen in Bowmanville. Otherwise, there have been very few donations to MS.

He would encourage you to please donate a cheque made out to the MS Society, Kingston chapter. Please send it to: 1080 Gardiner's Road, unit 3, Kingston, K7P 1R7. Every penny donated goes directly to client services, helping with everything from supplies for incontinence to respite care to meals-on-wheels.

But please remember: mark your cheque RE WILL'S RIDE. Follow him on his website, [www.willslide.ca](http://www.willslide.ca)

## HERE & THERE

- Ian Murray

The following is from one of my recent Beacon readings.

"This is Ian Murray speaking. I have now read the first 23 issues of the Amherst Island Beacon for CJAI. I have been reading from text that Don Tubb put into the computer. Unfortunately I had forgotten that, starting with the 22<sup>nd</sup> edition, the Beacon changed to a standard 8 ½" by 11" size and photos began to be included. This was in addition to Shirley Miller's cartoons.

"I decided early on to not try to describe the cartoons as I don't have the word-skill necessary.

"The photos, on the other hand, are something that I can describe fairly accurately. It would be a good idea if we could get them – and the cartoons – on to the Amherst Island web-site. If anyone has the skill, the time, the inclination, please contact me.

"Issue 22 has 2 photos, one each of the 2 Shirleys involved in the Beacon production – Shirley Sheil and Shirley Miller.

"Issue 23 also has 2 photos. The first one is called Winter Fun and shows a sleigh filled with young people being pulled by 2 work horses. St. Alban's is in the background. The second photo is of the injured fawn that was rescued by the Kaye McGinn family. Behind the fawn are Karen and Vernon McGinn who look to be about 11 and 8 respectively. I remember going with Glen Sheil to see this rescued fawn. It seemed to be a long drive between tall snow banks.

"Deer, at that time,. were not very common on the Island."

\*\*\*

I had 2 encounters recently with people with interesting Island connections.

One evening while I was waiting in front of Jacob and Sue's house for Sally to come back from her 10 minute canoe ride, a white pickup truck pulling a small motor boat slowed down and came to a stop. The female passenger asked if this was where Peachy Eves used to live. It was over 20 years since she last visited Peachy so it is little wonder that she didn't immediately recognize the house.

The woman was Sue Morris whose grandfather was Peachy's brother. She and her husband Brian were on the way to Brockville when they decided to visit Amherst Island. They met Garry Filson either while waiting at the dock or while on the boat and he, to their surprise, knew where Peachy lived. (He also knew of a B&B where they could stay.) Sue hadn't been on the Island for over 20 years.

Sally told Sue about our boys going over to visit Peachy and getting cookies. Peachy was a valued neighbour.

The second meeting occurred beside Rick Bedford's. I was on

a fence repair mission on the farmland across from Rick's so I stopped to ask the people in the 2 vehicles who were intently looking towards the lake what they were looking at. The spokesperson for the group of maybe 10 in 2 vehicles said that her father was raised there. I said that he must be a Kearney. Don Kearny, the youngest of the 12 Kearney children introduced himself and we had a brief visit. They didn't want to bother Rick and I needed to do some fencing. I should have taken the time to find where Don lived so I could arrange for an interview.

\*\*\*

I was chatting with Jim and Brenda VanAlstyne - they were working away at their new chimney - when Jim mentioned that if it weren't for Denis McGinn he wouldn't be here.

The first time that Jim's parents came over to see the lot in

Emerald that Jim and Brenda had bought, Jim's mother asked who the neighbours were. When Denis' name was mentioned, Jim's mother said you need to go over and thank Denis. This is the story.

Denis – and several other young Island men – used to work for Jim's grandfather who had a construction business. One day when Jim was quite small he was riding his tricycle along a laneway and Denis was walking beside him – on the grass side. Jim's grandfather came along in a truck and just as the truck was beside Jim and Denis, the back wheel came off the

tricycle and Jim started to fall under the back wheels of the truck. Denis grabbed him and Jim got to build a house on Amherst Island.

\*\*\*

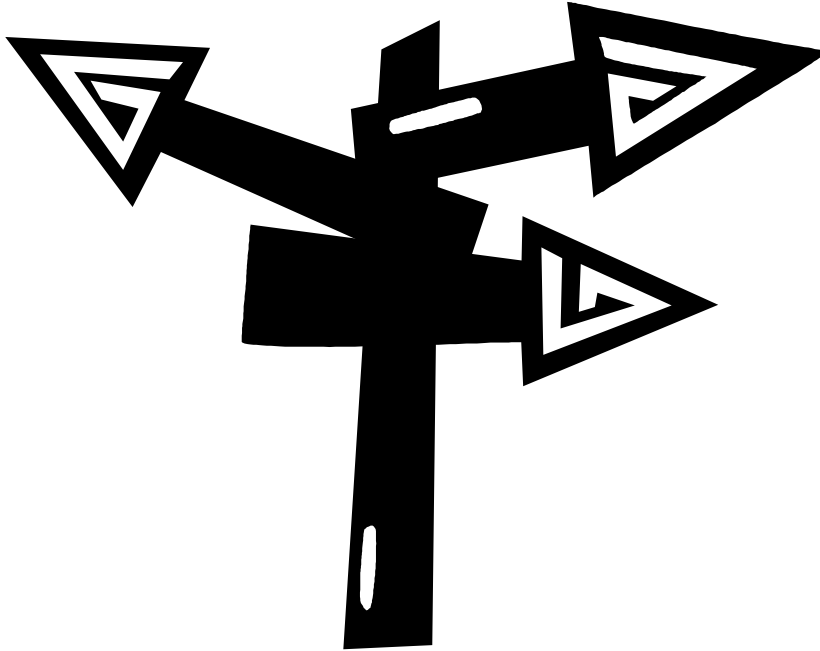
Vicki Keith appeared on the front page of the July 26 Whig along with Natalie Lambert who is attempting to be the youngest person to swim across Lake Ontario. Vicki has one of the best smiles ever.

\*\*\*

A recent Time Magazine described a "Failed States Index" which rates counties on "12 indicators of instability". It was no surprise to see the list headed by Sudan and Iraq with Afghanistan in 8<sup>th</sup> place. Canada, no surprise, was well towards the bottom at 168. The USA was at 160.

It was a pleasant surprise to see Ireland at 174. A big surprise, actually.

Norway ranked at the bottom, winning the least unstable state award. Considering all the Viking genes still floating around in that country, Norway should be of interest to those debating the effects of nature versus nurture.



## ART ON THE ISLAND



*MURRAY WILSON OF NAPANEE, TEACHES A CLASS THE ART OF PASTELS DURING A ONE-DAY COURSE ON THE 18TH OF JULY.*



*AMHERST ISLAND ARTIST AND TEACHER SHIRLEY MILLER BECAME A PUPIL FOR THE ONE-DAY PASTEL COURSE HELD ON THE GROUNDS OF THE WELBANKS FARMHOUSE ON SOUTH SHORE ROAD.*



*ROSIE FINDLAY OF FRONT ROAD ENJOYS THE FREE AND LOOSE DESIGN IN ACRYLIC COURSE HELD THROUGH THE LOYALIST COLLEGE SUMMER ARTS PROGRAM AT THE LODGE IN JUNE.*



FORMER AMHERST ISLANDER TED GOW AND HIS FRIEND TED DAVIES, A RETIRED UNITED CHURCH MINISTER AND ARTIST FROM THE BRUCE PENINSULA, VISITED TERRY CULBERT'S "ISLAND FOLK" ART SHOW AT THE LODGE.



WELL KNOWN TORONTO ARTIST ANDREW CHEDDIE SOOKRAH AND HIS WIFE PEGGY STODDART VISITED THE "ISLAND FOLK" SHOW. ANDREW WILL BE FEATURED AT THE LODGE BEGINNING SATURDAY, AUGUST 4TH, WITH HIS SHOW: "DARKENED SPACES—FULL OF LIGHT". ANDREW'S EXHIBIT WILL CONTINUE BY APPOINTMENT UNTIL AUGUST 29TH.



YVONNE PIBURN OF ITHACA, NEW YORK WAS ONE OF FOUR AMERICAN WATERCOLOURISTS PAINTING SCENES OF AMHERST ISLAND. THE GROUP VACATIONED AND PAINTED FOR THE WEEK, STAYING AT FOOT FLATS COTTAGE.



BARB HOGENAUER AND MOLLY STROYMAN, OWNER OF THE LODGE, LISTEN TO BARB'S GRANDSON ANDREW WOBBE GIVE A GUIDED TOUR OF THE "ISLAND FOLK" EXHIBIT. THEY ARE JOINED BY ANDREW'S SISTER HEATHER, BOTH FROM THE NORTHERN ONTARIO TOWN OF GERALDTON.

ALL CENTERFOLD PHOTOS BY TERRY CULBERT

## LYME DISEASE

- Sally Bowen

The black-legged deer ticks that can carry the Lyme Disease spirochete bacterial infection ARE in Canada, they ARE in The Thousand Islands, and in Southern Ontario, and THEY PROBABLY ARE ON AMHERST ISLAND.

Lyme Disease is a bacterial infection that can attack any part of the body. It does affect a person neurologically – either the peripheral or central nervous system. It can affect any organ of the body. It often affects joints. It can affect muscles and digestive systems. It is progressive. It is very difficult to detect and has been misdiagnosed as rheumatoid arthritis, Lou Gherig’s disease, Chronic Fatigue syndrome, and many others. Its spread is approaching epidemic proportions in certain north-eastern United States. Some doctors claim only 10 % of cases are detected. It is also difficult to treat.

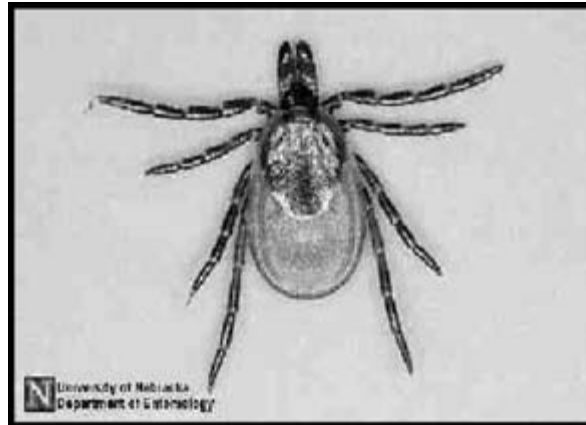
So, prevention is the best approach.

The ticks are incredibly tiny (except when engorged with a victim’s blood). Depending on their developmental stages in their 2-year life cycle, they may vary from the size of a grain of pepper to a sesame seed. Thus, they are difficult to detect.

Their most common hosts are deer, but they can travel on birds and rodents, and can live quite comfortably on your dog or cat.

There is enormous controversy about this disease. There is also disturbingly little general public information.

***Check your body thoroughly, daily, if you spend time in these habitats. There is less chance of infection if the tick is removed within 24 hours.***



This brief article focuses on prevention and procedures for removal of ticks.

Ticks prefer shady moist areas: wooded areas, low-growing grasslands or anywhere there is leaf mould or brush piles. (Doesn’t

eliminate much of the Island, does it?)

They don’t burrow through material – they need bare skin – so it is best to wear long pants tucked inside socks in these habitats. Hats and long-sleeved shirts are recommended too.

Check your body thoroughly, daily, if you spend time in these habitats. There is less chance of infection if the tick is removed within 24 hours.

If you find a tick embedded, it does not necessarily carry the infection, but treat it as though it might.

DO NOT panic, grab it, and pull it out. DO NOT use a lighted match or cigarette, petroleum jelly, nail polish or other product. The bacteria reside in its belly, and is transmitted through its saliva to your blood, so DO NOT SQUEEZE.

Recommended Techniques for Removal:

1. Physician Intra-dermal Blister Technique

A “Lyme-literate” doctor may inject xylocaine with adrenalin to generate a blister. The lack of blood and blister pressure will cause the tick to fall off.

(Do not assume your GP will be knowledgeable or agree. There is enormous controversy and lack of knowledge in some areas of the medical profession re Lyme Disease.)

***Some doctors claim only 10 % of cases are detected.***

2. Straw and Knot Technique

Place a drinking straw as a guide carefully over the tick at an angle. Tie a loose knot in a thread around the straw and slide it down to position it around the embedded mouth parts only, not around the belly. Slowly tighten the knot. Remove the straw. Pull thread slowly and steadily upwards.

3. Using Tweezers:

Place the ends of fine-pointed tweezers as close to the skin as possible. Squeeze the mouth parts of the tick, NOT the body of the tick. Pull firmly and steadily backwards.

After removal, wash the area thoroughly, then treat with antiseptic.

If you wish, you can have the tick tested to see whether it is of the species that carries Lyme, and whether it does in fact carry the bacteria. There are probably local possibilities, but one option is to place the tick in a ziplock bag with a

damp towel. Put that in another ziplock bag. Mail it to the Canadian Lyme Disease Federation with the following information: where the tick came from, when you found it on your body, and personal contact information.

Monitor your body very carefully for early signs of unwellness. You might develop the typical “bullseye” circular rash (but only 30% - 50% of sufferers see this.) You may develop general aches and pains and exhaustion and out-of-season flu-like symptoms. Seek medical aid FAST. Ensure that your doctor is “Lyme-literate” as there is still much confusion about whether this disease is present in Canada.

It is.

The above information is derived from: The Canadian Lyme Disease Federation website [www.canlyme.org](http://www.canlyme.org)  
2495 Reece Rd  
Westbank, BC  
V4T 1N1  
250 768-0978  
[www.canlyme.org](http://www.canlyme.org)





## SUSIE'S SWIM FOR KIDS

- Eric Welbanks (& Staff)

Susanne (Susie) Robinson of Bowmanville (formerly of Kingston) swam Lake on Monday July 30th in eight hours fourteen minutes.

This swim is Crystal Beach On to Sturgeon Point NY and is the given course for Lake Erie. She swam North to South because of the wind conditions. However the general conditions were great.

This is a World record for this swim and was previously held for several years by our good friend John Monroe. John and Vicki were a great help on this swim with John acting as Swim Master.

The swim was in support of the Rameses Shriners Transportation Fund.

Susie is the daughter of Noble Eric and Lady Linda Welbanks of Kingston.

Susie is married and the mother of five year old Erica and three year old Trent.

She was born on June 14, 1971 and has had an interest in Shrine activities since a child.

She is a Corporate Security Analyst for Hubbell North America in Ajax.

Her sister Cheryl, a High School teacher in Arnprior, was part of the swim and her brother Shawn, a Firefighter in Kingston, was the Zodiac operator.

Mom and Dad were along as support personnel.

Donations for the Transportation Fund can be sent to:  
Rameses Shriners Transportation Fund  
3100 Keele Street

Toronto, ON M3M 2H4

Attn: III. Sir Robert Whitmarsh

Susie's Swim for Kids

Donations \$ 20.00 and over will be given a tax receipt

Thank you to everyone who has an interest in this event.

## Susie's Swim



PHOTO PROVIDED BY ERIC WELBANKS

## WATERSIDE PRIDE



PHOTO PROVIDED BY BILL HARRIS

*BEV HARRIS, JANINA FIALKOWSKA, AND ERIC FRIESEN*

By Bill Harris

We have had more positive comments back from the Janina Fialkowska concert than usual, as a result, I think of her positive liking of the Island, where she stayed two nights at the Lodge with her husband Harry Oesterle.

She interrupted her performance at St Paul's by commenting "I have so much enjoyed my stay on your wonderful island. The peace and quiet and the absence of tall rock cliffs or high waterfalls make this a unique tranquil experience for those of us who visit."

That from someone who travels the world giving concerts.

After Amherst Island Janina was off to San Francisco and then Europe where she and Harry have a residence in the Bavarian mountains. Their principle residence is now in Connecticut although Janina grew up in Montreal, - and one of her old class mates from Montreal traveled to the concert just to hear her.



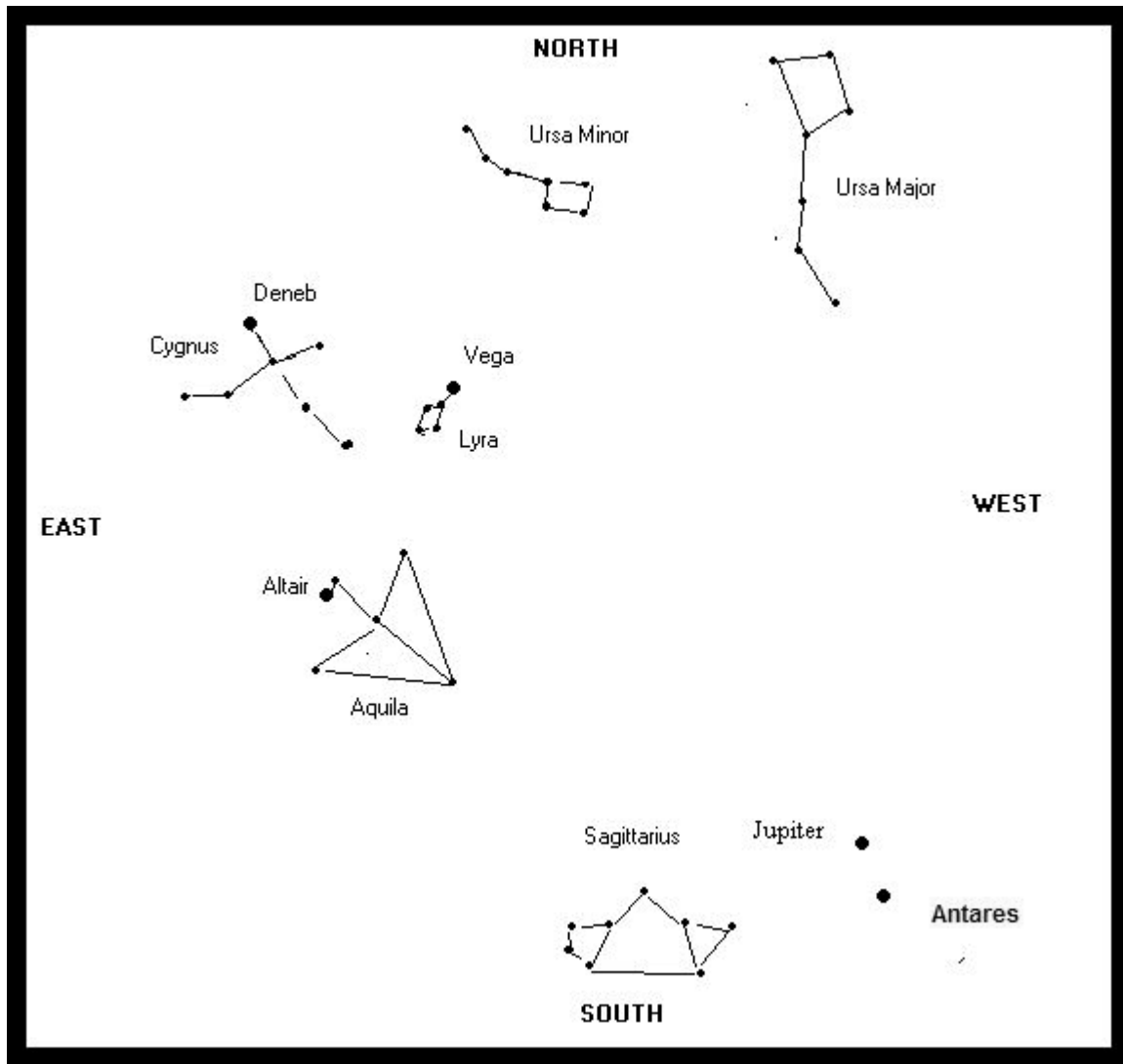
The Shriners are North American in that they are Shrine Masons from Canada, United States, Mexico and Panama.

Their philanthropic cause is the treatment of children up to 18 years old as needed in their 22 Shrine owned hospitals. The Canadian hospital in Montreal is the primary hospital for Canadian children. Other hospitals that Canadian children may go to are Erie Pennsylvania and Boston Mass.

Their specialty for treatment is children's orthopedics, burns and spinal cord research.

Children are treated in Shrine hospitals at no cost to the patient or parent.

The cost of transport and lodging is covered by the Shiners Transportation Fund.



## AUGUST SKIES

- Alan Kidd

We have some interesting events this month, a pre dawn lunar eclipse, a meteor shower with dark skies, the disappearance of Venus, and the long awaited reemergence of Mars. Of course there are also the summer constellations, a bit easier to see now that the sun is starting to set earlier.

At midnight, on August 15<sup>th</sup>, the constellation Cygnus, or the Northern Cross, is overhead. Now that we are getting closer to fall, there are more clear nights and the Milky Way should be more visible (if you're not too close to Kingston). When we look at the Milky Way, we are looking along the thickest part of the galactic disc and what we are seeing are literally clouds of stars. Following this cloud south from Cygnus, we come to the constellation Aquila, or the Eagle. The brightest star in Aquila, the head of the eagle, is Altair. Altair is fairly close to us, only 17 light years distant, a bit closer than Vega. Altair, like Vega, is bigger and more luminous than our sun.

The brightest star in the summer skies is Vega in the constel-



lation Lyra (the Lyre). This constellation is almost high in the sky this month. The other stars in the constellation are considerably dimmer than Vega, but you can usually make out a sort of kite shape with about four other stars. There are three double stars near Vega. The most famous of these is Epsilon Vega, which is right next to Vega. Even a small set of binoculars will show Epsilon Vega as a double star. A medium sized telescope will reveal that each of the stars in Epsilon is itself a double star. Thus its nickname is "Double Double"

Vega and Deneb (discussed last month) together with Altair form the summer triangle. These three stars are overhead throughout the summer and are among the first stars to appear after sunset (when we are waiting for the fireworks to start).

If we continue to follow the Milky Way south, we come to the constellation of Sagittarius, sometimes called the teapot. Sagittarius is always near the southern horizon and the Milky Way appears to be the steam coming from the spout of the teapot. When we look at Sagittarius we are looking in the direction of the centre of our galaxy, 26,000 light-years away. That's a long way, to

*(Continued on page 17)*

## PHOTO FROM THE PAST



*BACK ROW:*

*NANETTA STRAIN, GRANT FILSON, JOAN GIBSON, HELEN MCMASTER, ALTHA BEGGS, LESLIE GLENN, MILDRED GLENN, JANIE BROWN, RAYMOND REID, MURIEL GLENN.*

*FRONT ROW (SITTING)*

*JEAN MCMASTER, IRENE WELBANKS, HELEN WEMP, MARY GLENN, JANET FILSON, ISABEL RICHARDS.*

*FRONT ROW #2*

*HENRY HITCHINS, GERALD KEARNEY, JACK INSTANT*

*(Continued from page 16)*

be sure, but since the centre of our galaxy is thought to consist of an immense black hole, which is continually consuming the stars in the galactic core and thereby growing ever larger, living on the galactic outskirts has its advantages.

Venus, after putting on a brilliant show for the past several months, finally disappears from the evening sky. However, after passing behind the sun on the 16<sup>th</sup>, Venus reappears in the morning sky, rising an hour and a half before the sun at the end of August.

Mars is finally bright enough to be easily seen, although you have to stay up late. At 2am during the first week of August Mars can be seen just south of the Pleiades cluster. Mars will continue to brighten throughout the summer and fall, reached it greatest brilliancy just in time for Christmas.

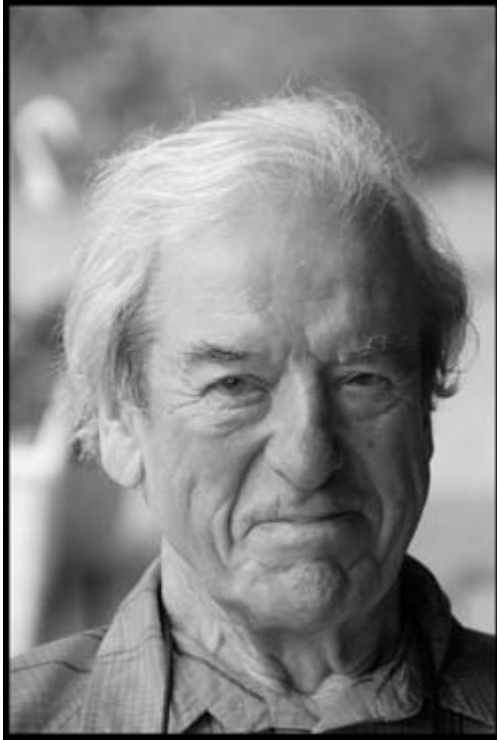
Jupiter is now the only planet visible in the evening sky, but its

makes up for it by its brightness, at magnitude -2.3. During the first half of August Jupiter is close to the reddish star Antares, low in the Southern skies.

This month's meteor shower, the Perseids, comes at a good time. The sky will be dark since the shower reaches maximum strength at the time of the new moon on the night of August 12<sup>th</sup>-13<sup>th</sup>. Here on the Island with relatively dark skies we may see around 60 meteors per hour.

Finally at the end of the month, in the early hours of August 28<sup>th</sup>, we get to see a lunar eclipse. Unfortunately we don't get to see the entire eclipse here on Amherst Island, because the moon sets while still in eclipse. You would have to go out to BC to see the whole thing. Anyway, the moon enters the earth's umbral shadow about 5:00 AM that morning and is totally eclipsed about an hour later.

# TOURING THE ISLAND WITH BRIAN LITTLE



*STANLEY BURKE*



*SASKIA AND WODON*



*BLACKSMITH PAUL  
CUYLERS FIRE.*



*LIBERAL CANDIDATE IAN WILSON WITH  
DOROTHY MCGINN*



*MORNING DUO TERRY CULBERT AND  
BRIAN LITTLE*

ALL PHOTOS BY BRIAN LITTLE



UNIVERSITY HOSPITALS  
KINGSTON FOUNDATION  
Our Hospitals. Our Health. Our Future.

### Information session

Wednesday, October 3, 2007  
7:00 PM at the School

### The future of your health care with Kingston's university hospitals

Come find out how the redevelopment of Kingston's uni-  
versity hospitals will change health care across  
Southeastern Ontario.  
Cancer Centre for Southeastern Ontario  
Kingston General Hospital  
Hotel Dieu Hospital  
Providence Care

Presented by the University Hospitals Kingston  
Foundation

University Hospitals Kingston Foundation is the fundrais-  
ing arm for Hotel Dieu Hospital, Kingston General Hospital  
and Providence Care.

Phone: 613-549-5452  
Toll-free: 866-549-5452

WWW.KINGSTONHOSPITALSFOUNDATION.CA



PHOTO BY DAVE YOUELL

### EUCHRE IS BACK

STARTING FRIDAY SEPT 7 AT 7:30 P.M.

WE HAVE NO PROFESSIONAL PLAYERS SO IF YOU KNOW HOW  
TO PLAY EUCHRE COME OUT FOR AN EVENING OF FUN AND FEL-  
LOWSHIP. LIGHT REFRESHMENTS AND COFFEE ALL EVENING.

GOOD PRIZES AT END OF SERIES

THERE WILL BE A SHARE THE WEALTH DRAW AFTER 6 GAMES.  
SPONSORED BY THE ACW

ADMISSION IS \$3.00

NO EUCHRE NOV. 16.



It was obvious that some were aware that I had had ankle re-  
placement surgery in Kitchener in May. I do want to say how  
much I appreciated the "get well" cards, letters and telephone  
calls. A special thanks to the Amherst Island Women's Institute,  
St. Paul's Church Women and Freda, for her very creative po-  
etry. I must say I have enjoyed the attention and the expressions  
of sympathy I have received!

Dick Dodds

\*\*\*\*\*

Connie and I would like to Thank the First Response team for  
coming so quickly for our mom when she needed your help so  
much.

We are lucky to have people that are trained to help in emer-  
gency situations. Thank you

Tessa Mayman & Connie Free.

Our mom would also like to say Thank-You to everyone that  
had sent flowers, cards and well wishes.

\*\*\*\*\*

I would like to thank my friends, family, and relatives for all the  
lovely cards, flowers, phone calls, pies, visits in the hospital and  
at home while I was recovering from my surgery. Thank you  
Rev Dunn for your visits, and prayers. Special thanks to Ted  
and my children for being there for me every day while I was in  
the hospital, and for all your help after returning home.

Thanks again,

Faye Wemp

## NOTICES

## ARTISTS

CALLING ALL AMHERST ISLAND ARTISTS, (AND ONLY AI ARTISTS) ALL AGES!  
 LOOKING FOR TWO DIMENSIONAL WORK, IN ANY MEDIUM, EXPRESSING THE THEME: AUTUMN  
 FOR A THANKSGIVING SHOW AT THE LODGE ON AMHERST ISLAND  
 EACH ARTIST MAY SUBMIT UP TO THREE PIECES. EACH PIECE MUST BE FOR SALE AND  
 READY FOR HANGING.  
 ENTRY FORMS WILL BE AVAILABLE AT THE LODGE, ONLINE AND AT THE STORE BY JUNE 15TH  
 ALL WORKS MUST BE DELIVERED TO LODGE BY 11:00 AM, MONDAY, OCTOBER 1ST, 2007.  
 THE SHOW WILL BE SELECTED FROM THE BODY OF WORK DELIVERED BY THAT TIME.  
 THE SHOW WILL OPEN SATURDAY, OCTOBER 6TH FROM 2 - 4 PM, AND WILL HANG UNTIL  
 MID NOVEMBER.  
 MORE DETAILS WILL FOLLOW

## NATURSAC

THE AMHERST ISLAND WOMEN'S INSTITUTE PROMOTES THE NATURSAC  
 WHAT? THE NATURSAC, A NEW-GENERATION BIODEGRADABLE PLASTIC BAG, IS NOW AVAILABLE ON THE ISLAND. THEY ARE MADE PRIMARILY FROM CORNSTARCH AND FULLY BIODEGRADABLE POLYMERS OR POLYLACTIC ACID. THEY CAN CARRY 22 POUNDS OF CONTENTS. THEY HAVE A SHELF LIFE OF TWO YEARS WHEN STORED AT NORMAL ROOM TEMPERATURE.  
 WHY? NATURSAC BAGS ARE 100% BIODEGRADABLE-COMPOSTABLE, AND CAN BE REUSED AND RECYCLED MANY TIMES. THEY REDUCE LANDFILL MASS, ALLOW CONTENTS TO DISINTEGRATE, AND IF BLOWN ABOUT IN THE WIND, WILL BIODEGRADE, UNLIKE REGULAR PLASTIC BAGS THAT REMAIN CAUGHT ON BRANCHES OR FLOAT IN WATER FOR YEARS, AN UNSIGHTLY MESS AND POTENTIALLY LETHAL TO ANIMALS. THEY TAKE LESS ENERGY AND WATER TO PRODUCE THAN PAPER BAGS, AND ARE MORE DURABLE THAN PAPER BAGS IN WET WEATHER. THEY DISINTEGRATE IN 12-24 MONTHS, COMPARED TO REGULAR PLASTIC BAGS THAT TAKE CENTURIES TO DECOMPOSE. THEY LEAVE NO TOXIC OR POLY RESIDUES IN THE SOIL, AND THE RESULTING COMPOST WILL BE ABLE TO SUPPORT PLANT GROWTH.  
 WHERE? USED BY THE WEASEL AND EASEL, THE AMHERST ISLAND GENERAL STORE, AND AVAILABLE AT THE MARKET FROM THE WOMEN'S INSTITUTE.  
 HOW MUCH. 20/\$1.00, 100/\$5.00

## WE INVITE YOU TO JOIN THE FIGHT

- SHERRY MILLER

AMHERST ISLAND IS GOING TO BE THE PLACE TO BE AT 10 A.M ON OCTOBER 20TH. ON THIS DATE THERE WILL BE AN EVENT HELD THAT IS LIKE NO OTHER. A GROUP OF YOUR NEIGHBOURS IS ORGANIZING A WALK, RUN, CYCLE EVENT IN SUPPORT OF THE ONTARIO BREAST SCREENING PROGRAM. OUR MOTTO IS "EVERYONE COUNTS" AS EVERYONE HAS A VESTED INTEREST IN FIGHTING THIS HORRIBLE DISEASE THAT WILL STRIKE ONE IN NINE WOMEN IN CANADA (EVERY WEEK 170 MEN ARE DIAGNOSED WITH BREAST CANCER...THOUGH LESS COMMON AND RARELY DISCUSSED IT DOES HAPPEN FREQUENTLY) AND EARLY DETECTION IS THE KEY TO SURVIVAL.

IN KEEPING WITH OUR "EVERYONE COUNTS" MOTTO WE WANT TO ENLIST YOUR HELP. PLEASE SET ASIDE THIS DATE. THE WALK WILL BE FOLLOWED BY A COMMUNITY BARBEQUE AND SILENT AUCTION THAT WILL RAISE FUNDS TO SUPPORT THIS GREAT PROGRAM.

WE ARE ALSO SELLING GREEN GROCERY BAGS IN SUPPORT OF OUR CORPORATE SPONSORS AND ALSO TO HELP OUR ENVIRONMENT. WATCH FOR POSTERS WITHIN YOUR COMMUNITY AND AT THE MARKET ONCE THEY BECOME AVAILABLE...A GREAT BUY, TO SUPPORT A GREAT CAUSE AND IN ADDITION IT HELPS TO ELIMINATE PLASTIC IN OUR HOUSE-

## NOTICES

## CAROLINE YULL LEGAL SERVICES

I HAVE TEMPORARILY MOVED MY PRACTICE TO MY HOME OFFICE. I HAVE SET MY VOICEMAIL UP WITH SEPARATE MAILBOXES FOR PERSONAL AND PROFESSIONAL MESSAGES, SO FOLLOW THE PROMPTS TO KEEP YOUR BUSINESS MESSAGE UNAVAILABLE TO ANYONE BUT ME. LOOK FOR MY NEW OFFICE IN AMHERSTVIEW AT 18 MANITOU CRESCENT WEST (IN THE CORNER NEAR THE LIQUOR STORE) AFTER THE END OF JULY. I'LL ANNOUNCE NEW PHONE NUMBERS THEN. I AM STILL HAPPY TO MEET WITH YOU AT YOUR HOME, IF THAT IS MORE CONVENIENT FOR YOU. NEW OFFICE CONTACT INFO:

PHONE: 613-384-4071 (SAME NUMBER FOR FAX)

EMAIL: [CYULL@KOS.NET](mailto:CYULL@KOS.NET)  
 5115 FRONT ROAD  
 STELLA, ONTARIO

## NOTICES

**WATER SIDE**  
 SUMMER SERIES

## 2007 CONCERT INFORMATION

ALL CONCERTS AT ST. PAUL'S CHURCH AMHERST ISLAND 7.15PM  
 WEDNESDAY, AUGUST 8/07 THE *MICHAEL KAESHAMMER TRIO*. "BOOGIE-WOOGIE, RAGTIME. AND ROMANTIC BALLADS WITH JAZZ STYLINGS SEAMLESSLY MELDING INTO A UNIQUE PIANO SOUND".

[WWW.KAESHAMMER.COM](http://WWW.KAESHAMMER.COM) TICKETS \$30  
 FRIDAY, AUGUST 17/07 *GORDON CRAIG, CLARINET & MICHEL SZCZESNIAK* PIANO, ENTERTAIN WITH CLASSICAL PIECES AND IMPROVISED STYLINGS OF POPULAR FAVOURITES.

[HTTP://WWW.QUEENSU.CA/MUSIC/PEOPLE](http://WWW.QUEENSU.CA/MUSIC/PEOPLE)  
 TICKETS \$20

TICKET INFORMATION. TO RESERVE TICKETS, PAYMENT BY CHEQUE MUST BE RECEIVED IN ADVANCE. THEY GO ON SALE MAY 1, AND MAY BE ORDERED BY TELEPHONE AT 613-384-2153, OR BY MAIL AT WATERSIDE, RR#1 STELLA ON K0H 2S0, RESERVED TICKETS WILL BE MAILED IF PURCHASED TWO WEEKS PRIOR OR CAN BE PICKED UP ON THE DAY OF THE PERFORMANCE AFTER 6:30 PM. IF AVAILABLE, TICKETS MAY BE PURCHASED AT THE DOOR.

FURTHER INFORMATION AT  
[WWW.AMHERSTISLAND.ON.CA](http://WWW.AMHERSTISLAND.ON.CA)

## NEWS FROM THE GENERAL STORE

THE *WHIG STANDARD* WILL NOW BE AVAILABLE MONDAY THRU SATURDAY BEGINNING TUES. AUG. T. AT THE STORE.

JUST IN TIME FOR SUMMER OR ANYTIME FOR A COOL DESERT. WE NOW HAVE **ICE CREAM PIES** AVAILABLE. CHOCOLATE PEANUT BUTTER MMM—\$13.00, AS WELL AS THE SAME GREAT BAKE 'N' SERVE PIES. ALWAYS DELICIOUS, ALWAYS FRESH **SWEET CORN** IS AVAILABLE ONCE AGAIN.

**MOVIES**—NEW RELEASES FOR RENT: **THE NUMBER 23**—JIM CARREY, **PREMONITION**—SANDRA BULLOCK, **300**—GERARD BUTLER, **BECAUSE I SAID SO**—DIANE KEATON, MANDY MOORE, **ZODIAC**—ROBERT DOWNEY JR., JAKE GYLLENHAAL, **FOR THE KIDS—THE LAST MIMZY, BRIDGE TO TERABITHIA**. MANY MORE TO CHOOSE FROM.  
 ENJOY THE SUMMER!

## UPS

NOW DELIVERING AND PICKING UP ON THE ISLAND: MONDAY – FRIDAY, EXCEPT FOR MAJOR HOLIDAYS.

CONTACT SUPERVISOR, SEAN LE AT (613) 549-7872.

PLEASE CALL 1-800-742-5877 FOR RATES. ALSO A CALL AHEAD OF TIME TO SEAN WOULD BE APPRECIATED.



# ~ CLASSIFIEDS ~

## FOR SALE



### LOT FOR SALE ON AMHERST ISLAND

WATER VIEW AND WATER ACCESS APPROVED FOR BUILDING AND SEPTIC WELL AND DRIVEWAY INSTALLED  
CALL: 613 389 4143

THE LIBRARY HOURS ARE CHANGING IN MARCH 2007 FOR THE STELLA LIBRARY. NO WEDNESDAY.  
TUESDAY EVENING 6:00 P.M TO 9:00 P.M  
FRIDAY 11:00 A.M. TO 2:00 P.M.

### FRESH FROM THE PLANT:

BASIL, PARSLEY, ROSEMARY, SEASONAL BOUQUETS, SOME VEGGIES.  
MORNINGS ONLY AT TOPSY FARMS.  
CALL SALLY, 613-389-3444

### AMHERST ISLAND DIRECTORY

THE WOMEN'S INSTITUTE HAS PUBLISHED THE NEW PHONE BOOK.

COPIES OF THE DIRECTORY CAN BE PURCHASED AT THE AMHERST ISLAND GENERAL STORE AND OUR COFFEE WAGON AT THE MARKET.

\$10.00 EACH. THE PROCEEDS SUPPORT NUMEROUS COMMUNITY ACTIVITIES.

**VILAS (QUEBEC HARD MAPLE) CHAIRS**  
4 PAINTED BLACK. \$100/ BEST OFFER.  
CALL CLAIRE OR HUGH JENNEY 384-7830 FOR VIEWING.

## FOR SALE

### AMHERST ISLAND T-SHIRTS AND SWEATSHIRTS

AVAILABLE FOR SALE FROM BETH FORESTER 613-389-5582 OR LINDA WELBANKS 613-389-4143

### PICNIC TABLES & WEATHER VANES

KEITH MILLER, 389-2588

### RAWLEIGH.

TO PLACE YOUR ORDER CALL MARIE WARD AT 613-389-5767 OR E-MAIL [BMWARD@IHORIZONS.NET](mailto:BMWARD@IHORIZONS.NET)

### BLACKSMITH CREATIONS

FOR BEAUTIFUL HAND-CRAFTED WROUGHT IRON GATES, FENCES, HANDRAILS, FIRE PITS, GARDEN ARCHES AND MANY OTHER ITEMS FOR YOUR HOME AND GARDEN, VISIT PAUL AND VICTORIA CUYLER'S WEBSITE AT [WWW.PRCIRONWORKS.CA](http://WWW.PRCIRONWORKS.CA) CUSTOM WORK ALSO DONE TO ORDER.

PAUL CUYLER (BLACKSMITH) AND VICTORIA CUYLER (METALWORKER) ARE THE ARTISANS HELPING TO BRING THE STELLA BLACKSMITH SHOP BACK TO LIFE. THEY HAVE A SMALL BLACKSMITH/METAL CUTTING OPERATION IN NEWTONVILLE (NEAR PORT HOPE).

### 8"x10" PHOTOGRAPHS

BY DON TUBB: SHEEP AND THEIR GUARDIAN DOGS AND OTHER ISLAND SUBJECTS. UNFRAMED, \$40; FRAMED, INDIVIDUALLY PRICED. FOR VIEWING, PLEASE VISIT TOPSY FARMS WOOL SHED OR VIEW PICTURES IN GALLERY AT [WWW.TOPSYFARMS.COM](http://WWW.TOPSYFARMS.COM). PLEASE CALL FOR APPOINTMENT OR TO PLACE ORDERS. (613) 389-3444

### LANDFILL SITE HOURS

WED 11-2; SAT 10-NOON; SUN 2-4.

### FERRY OFFICE HOURS

MON, WED, FRI: 9-NOON & 1-4  
FERRY FUEL-UP DAYS ARE TUESDAY AND FRIDAY (BE PREPARED FOR A DELAY).

### LIBRARY HOURS

TUESDAY 7-9PM, WED 10-NOON, FRIDAY 1-3PM.

## WANTED

### SPCA

I AM COLLECTING THE FOLLOWING FOR THE NAPANEE S.P.C.A. ANY KIND OF USED STAMPS. A&P TAPES, CANADIAN TIRE MONEY. USED TOWELS, ETC, AND CLEANING SUPPLIES. CAT AND DOG FOOD. KNITTED SQUARES & MATERIAL PLACEMATS. (THE LATTER PROVIDE COMFORT TO CATS AND DOGS IN CAGES.) THE "CAT'S MEOW" THRIFT STORE IS ALWAYS GRATEFUL FOR USED CLEAN CLOTHING AND PAPERBACK BOOKS. ANY OF THE ABOVE MAY BE LEFT IN MY PORCH OR CALL ME REGARDING ANY OTHER ITEMS. THE ANIMALS REALLY DO NEED OUR HELP. FRED A 613-384-4135

## LOST ITEMS

## FOR RENT

### HOUSE FOR RENT:

YEAR-ROUND, BY THE WEEK, WEEKEND OR MONTH ON THE NORTH SHORE.  
CALL CHERRY 613-634-1212

### COTTAGE

THREE BEDROOM COTTAGE FOR RENT ON NORTH SHORE, SLEEPS TEN. PADDLE BOAT, CANOE, BIKES AND SWIMMING RAFT. REASONABLE RATES. CONTACT CAROLYN (905) 729-3259 OR [CGREEN@LOOK.CA](mailto:CGREEN@LOOK.CA)

### SAND BAY BED & BREAKFAST

PRIVATE WATERFRONT, LAST HOUSE ON THE NORTH-EAST SHORE OF AMHERST ISLAND WITH SPECTACULAR VIEW. BELGIAN HORSE-DRAWN CARRIAGE OR WAGON RIDES ALSO AVAILABLE. CONTACT SUSAN & GARRY FILSON 2 FRONT ROAD, STELLA.  
PHONE: 613-384-7866.

### SOUTH SHORE COTTAGE

ON PRIVATE, SECLUDED PENINSULA. OVER 2000FT OF LIMESTONE SHORELINE. CALL (613) 389-5536 FOR FURTHER INFORMATION.

# ~ CLASSIFIEDS ~

## FOR RENT

### NORTH SHORE COTTAGE

PRIVATE WITH GOOD SWIMMING. BY THE WEEK OR WEEK-END, MAY-OCTOBER. CALL CHERRY 613-634-1212

### STORAGE

SEASONAL STORAGE IN STELLA! - BOATS, CARS, SNOWMOBILES, ETC. INDOORS, REASONABLE RATES. DAYLE GOWAN 613-634-3815

### THE LODGE ON AMHERST ISLAND

LODGING ROOMS AND RENTAL AVAILABLE FOR SPECIAL OCCASIONS. CALL: (866) 552-3535

WWW.AMHERSTISLAND.ON.CA/THELODGE ALSO, 1 & 2 BEDROOM COTTAGES ON STELLA POINT. BY THE WEEK OR WEEKEND, APRIL - OCTOBER. (PHONE NUMBERS ABOVE).



## SERVICES/BUSINESS ADS

### VICTORIA HALL CRAFTS & TEA ROOM

FOR LUNCH, AFTERNOON TEAS, AND EARLY DINNERS. HOME COOKED FOOD...OPEN YEAR ROUND FROM NOON TO 6PM. WEDNESDAY THROUGH SUNDAY HALL AVAILABLE FOR PRIVATE FUNCTIONS. SEE OUR LOCAL CRAFT DISPLAY. FOR RESERVATION CALL BERNICE OR NEIL - 613-389-5389 5545 FRONT ROAD, AMHERST ISLAND

## SERVICES/BUSINESS ADS



**Little Red Hen**  
At Your Service

Saskia Wagemans

Let me help you with:

- Your House
- Your Yard
- Your Pets
- Your Parties
- Your Food
- Your Move

613 384 7183

613 483 7518

wagemans\_s@yahoo.ca

http://lrhservices.com



## SERVICES/BUSINESS ADS

### LAKESHORE RUBBER STAMP

I CAN PROVIDE BUSINESS AND ART STAMPS, DATERS, SIGNATURE AND SIMILAR PRODUCTS. ALL STAMPS ARE CUSTOM MADE ON THE PREMISES AND CAN BE READY IN 24 HOURS. PLEASE CALL 613-389-8441 OR FAX 613-389-9770 EMAIL:

SELC.WELBANKS@SYMPATICO.CA  
THIS IS A HOME-BASED BUSINESS AND AVAILABLE MOST DAYS.

**CANADA POST HOURS OF OPERATION:**  
MON-FRI: 9AM – 11:30AM; 2:30PM- 5PM.  
SAT. 9AM-NOON.

**CERTIFIED COMPUTER TECHNICIAN** WITH 12 YEARS EXPERIENCE. HARDWARE INSTALLS/REPAIRS/UPGRADES. NETWORKING AND INTERNET SETUP INCLUDING WIRELESS. TUTORING. VIRUS AND SPYWARE REMOVAL AND ASSISTANCE ON PREVENTION.

\$ 65.00 FOR THE FIRST HOUR AND \$40.00 FOR SUBSEQUENT HOURS. COLLEEN: OFFICE AND MSGS: 613-634-6334  
CELL: 613-539-1900  
COLLEEN@LAHAISE.NET  
WWW.LAHAISE.NET

## PERSONAL CARE

### MINDFULNESS MEDITATION WORKSHOP

THIS PRACTICE DEEPENS OUR CONNECTION TO THE RICHNESS OF THE PRESENT MOMENT AND DEVELOPS CONCENTRATION, INSIGHT AND COMPASSION.

COMPLEMENTARY HEALTH- JOCELYNE LEYTON, RPP, OFFERS TREATMENTS IN CRANIAL OSTEOPATHY.

OSTEOPATHY TREATS THE WHOLE PERSON NOT JUST THE AREAS OF THE BODY CAUSING SYMPTOMS. IT ENABLES THE BODY TO HEAL ITSELF BY RELEASING THE PAINFUL HOLDING PATTERNS AND IMPROVING CIRCULATION. THIS GENTLE MANUAL THERAPY WILL IMPROVE YOUR HEALTH. FOR AN APPOINTMENT TELEPHONE (613) 384-6488, 9060C FRONT ROAD.

### CUTS IN MOTION

PROFESSIONAL HAIR CARE IN YOUR HOME OFFERING CUTS, PERMS AND COLOURS. OVER 20 YEARS EXPERIENCE. CALL KIM AT 613-386-7821. (ISLAND REFERENCES AVAILABLE.)

**BRIAN LITTLE - PHOTOGRAPHY**  
1199-120 CONCESSION STELLA ONTARIO K9H 1A6 BRIANLITTLE@GOS.NET

PORTRAITS  
WILDLIFE  
AERIAL  
WEDDINGS  
EVENT  
LANDSCAPE  
FINE ART  
ADVERTISING  
DESIGN & PUBLISHING

613-389-3111

# ~ CLASSIFIEDS ~

## PERSONAL CARE

### THERAPY

THERE ARE VERY FEW THINGS IN LIFE MORE RELAXING THAN A FOOT MASSAGE. REFLEXOLOGY HELPS TO IMPROVE CIRCULATION AND DECREASE ANXIETY. SHIATSU MASSAGE THERAPY ALSO HAS A CALMING EFFECT ON THE BODY. DURING A SESSION, LOOSE COMFORTABLE CLOTHING IS WORN AT ALL TIMES. FOR AN APPOINTMENT, PLEASE CALL: STELLA O'BYRNE 389-1681

## HOME SERVICES

### G L M CONSTRUCTION

ISLAND OWNED AND OPERATED. COMPLETE SERVICES, ALL TRADES, ANY SIZE JOB FROM DESIGN TO CONSTRUCTION TO FINISHING. WE HAVE THE CONNECTIONS TO GET YOUR JOB DONE. REFERENCES.  
GARY McDONALD: 384-1456.

### THOMAS A. RICHMOND

CERTIFIED ELECTRICIAN  
HOME, FARM & COMMERCIAL WIRING & REPAIRS, RIGHT HERE ON THE ISLAND. ELECTRICAL SAFETY AUTHORITY AUTHORIZED CONTRACTOR PROGRAM. 634-1855.

### PAUL CLOUTIER CARPENTRY

BUILT GARRY & SUSAN FILSON'S HOUSE ON THE ISLAND IN 2004 AND HAVE BEEN WORKING ON THE ISLAND EVER SINCE. FROM COMPLETE HOME CONSTRUCTION, RENOVATIONS, FINE CARPENTRY AND WOODWORKING TO ROOFING AND DECK CONSTRUCTION. ISLAND REFERENCES AVAILABLE.  
CELL: (613) 530-5245

### PAINTING AND DECORATING

YOU'VE SEEN IT ON TELEVISION. YOU HAVE THE ROOM. YOU HAVE THE BUDGET. NOW, WHERE DO YOU FIND THE DECORATOR?  
SEE SHELL  
GREAT IDEAS, LOTS OF HANDS-ON EXPERIENCE, AND NONE OF THE EGO PROBLEMS OF THOSE TV FOLKS. ISLAND REFERENCES.  
PHONE 378-2736

## HOME SERVICES

### HANDYMAN

NEED THOSE SMALL REPAIRS DONE? TREES TRIMMED/REMOVED? ROOF REPAIRED OR REDONE IN EITHER SHINGLES OR METAL? TRASH/DEBRIS REMOVED? WOOD CUT/SPLIT/RESTACKED? ESTIMATES GIVEN - EITHER HOURLY RATES OR BY THE JOB. CALL AND BOOK NOW - 389-1579 AND ASK FOR DALE

### FOR HOUSEWORK:

CALL CONNIE AT 634-3075.

### WATER WELLS & WATER TREATMENT

JOHN JEFFERY  
PHONE 561-7867.

### TURVY GENERAL CONTRACTING

A VARIETY OF SERVICES INCLUDING:

- YARD WORK
  - BRUSH CUTTING/CLEARING, REMOVAL
  - BASIC HOME REPAIRS
  - MANY MORE
- CALL (613) 384-0184.  
REASONABLE RATES.  
JACOB & KYLE MURRAY



## PUBLISHING

### PROSE RED PUBLISHING

PROSE RED BOOKS AND "THE LIFE STORY GAME" ARE AVAILABLE ONLINE AT "WWW.PROSERED.COM" OR VICTORIA HALL IN STELLA OR PROSE RED AT 444 MAIN ST. NEWBURGH WED-SUN 10-4

## BABYSITTERS

- AFTER SCHOOL AND WEEKENDS.
- RESPONSIBLE & RED CROSS CERTIFIED
- CALL TALIA FLEMING 389-9869

**RED CROSS BABYSITTING & CPR CERTIFIED** - AVAILABLE AFTER SCHOOL, EARLY EVENINGS & WEEKENDS.  
BETH ALBERTAN: 389-2662

## BABYSITTERS

**RED CROSS CERTIFIED BABYSITTER.**  
AVAILABLE EARLY EVENINGS & WEEKENDS.  
TORRI PHILLIPS: 389-0512

## FARM PRODUCTS

**GODDEN'S WHOLE HOG SAUSAGE**  
AVAILABLE IN FOUR DISTINCT FLAVOURS - SALT & PEPPER; HONEY GARLIC; TOMATO OREGANO; HOT ITALIAN.

NEW! BREAKFAST SAUSAGES - SALT & PEPPER OR MAPLE FLAVOUR! OUR FROZEN SAUSAGES ARE AVAILABLE IN 5 AND 10 LB. BOXES AT POPLAR DELL B&B, 389-2012.

## HOME GROWN BEEF

GOVERNMENT INSPECTED  
AVAILABLE IN APPROXIMATELY 25 OR 50LB FREEZER PACKAGES. \$4.99/LB INCLUDING: ROASTS, STEAKS, STEW, HAMBURG, & PATTIES. INDIVIDUAL VACUUM-PACKED PIECES.  
CALL FLEMINGISLE FARMS 389-9869.

## TOPSY FARMS' WOOL SHED

WE HAVE A GOOD INVENTORY OF WOOL/COTTON MATTRESS PADS AND DUVETS AND PILLOWS, AS WELL AS OUR GREAT BLANKETS, WRAPS AND LAP ROBES, AND SHEEP AND LAMB SKINS.  
A PLEASANT OUTING TO ENTERTAIN GUESTS.  
PLEASE PHONE US BEFORE YOU COME TO MAKE SURE WE ARE AROUND. 389-3444.



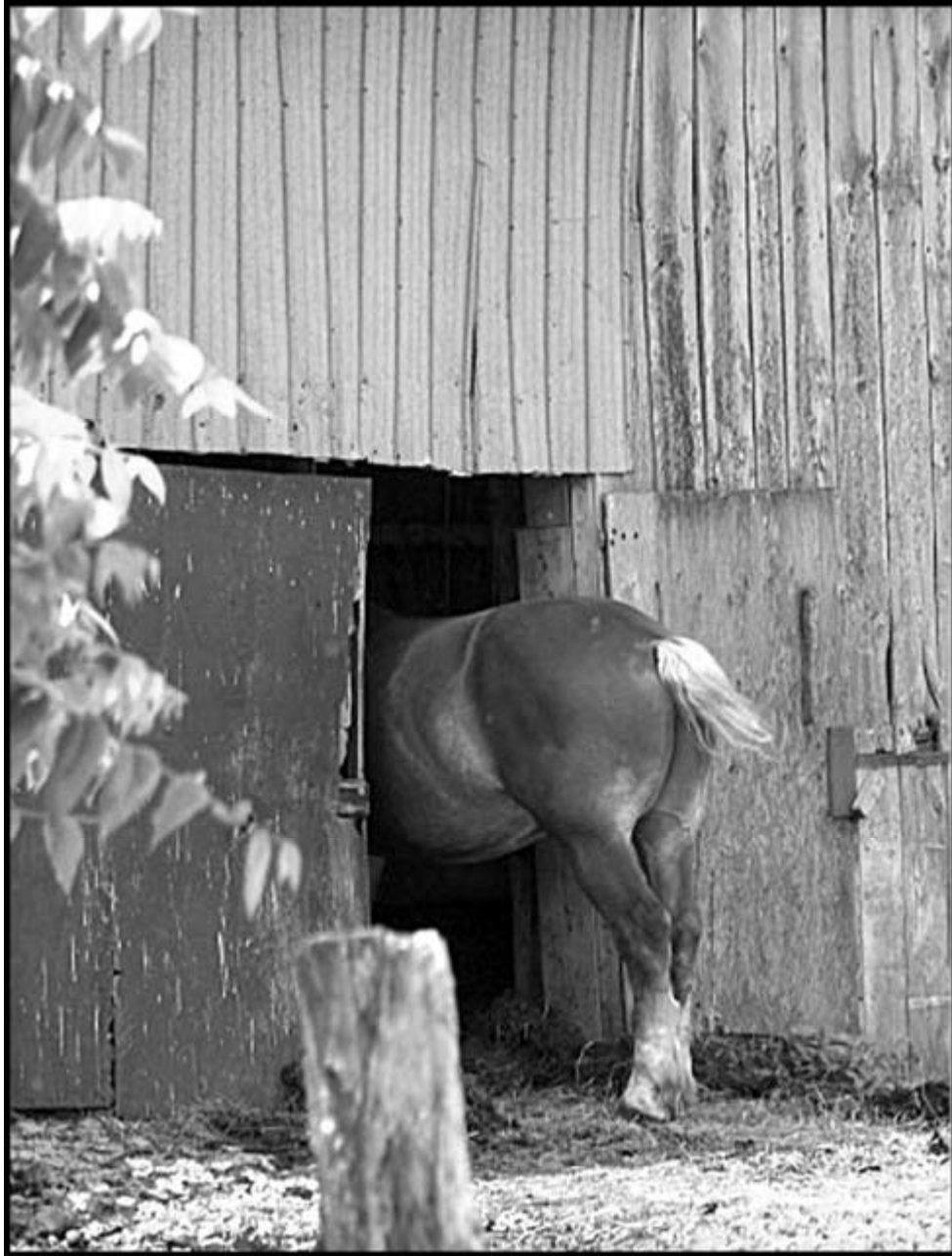


PHOTO BY TERRY CULBERT

*ONE OF TED WELBANKS BELGIAN HORSES COOLS THE FRONT OF HIS BODY IN THE SHADE OF THE SOUTH SHORE BARN, WHILST ITS HIND QUARTERS REQUIRED A BIT MORE TANNING.*

The



Foot